

# Concerto for Horn in E $\flat$ Major, K. 417

## Violin II

### Wolfgang Amadeus Mozart (1756-1791)

# Allegro maestoso

Musical score for "The Rose Tree" in B-flat major, 3/4 time. The score is for a single melodic line and includes dynamics (p, f), articulation (accents), and repeat signs. It is divided into sections A, B, and C.

The score begins with a treble clef, a key signature of two flats (B-flat major), and a common time signature (C). The melody is written on a single staff.

The first system (measures 1-4) starts with a piano (*p*) dynamic. The second system (measures 5-8) includes a forte (*f*) dynamic and a piano (*p*) dynamic. The third system (measures 9-12) includes a piano (*p*) dynamic. The fourth system (measures 13-16) includes a forte (*f*) dynamic. The fifth system (measures 17-20) includes a forte (*f*) dynamic. The sixth system (measures 21-24) includes a piano (*p*) dynamic. The seventh system (measures 25-28) includes a piano (*p*) dynamic. The eighth system (measures 29-32) includes a piano (*p*) dynamic. The ninth system (measures 33-36) includes a piano (*p*) dynamic. The tenth system (measures 37-40) includes a piano (*p*) dynamic. The eleventh system (measures 41-44) includes a piano (*p*) dynamic.

The score is divided into sections A, B, and C. Section A is measures 25-28. Section B is measures 29-32. Section C is measures 33-36.

Public Domain

46



52



58



64



69



75



81



85



90



96



101



104



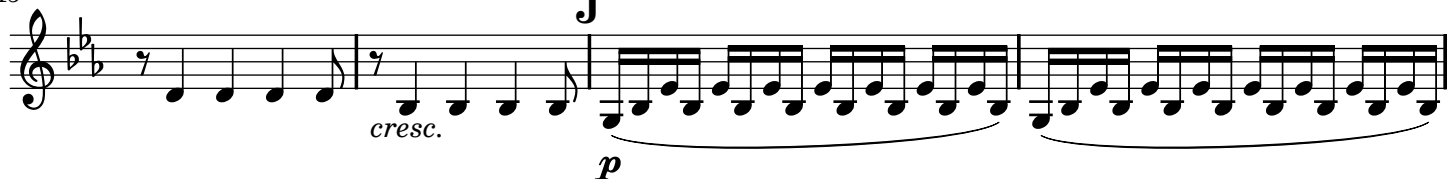
107



110



115



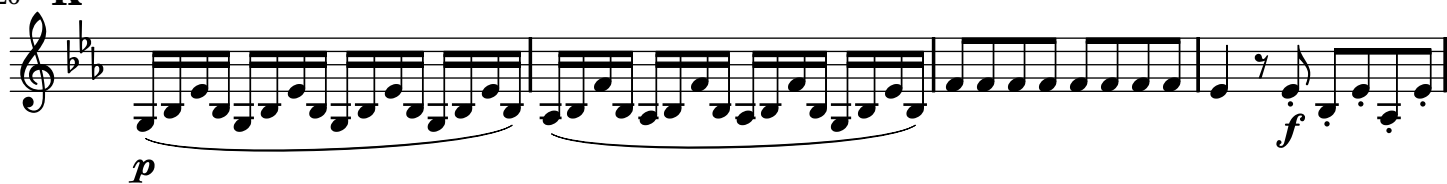
119



122



126



130



135 **L**

*p*

141

146 **M**

151

156

161 **N**

166

171

176

*f* *p*

181

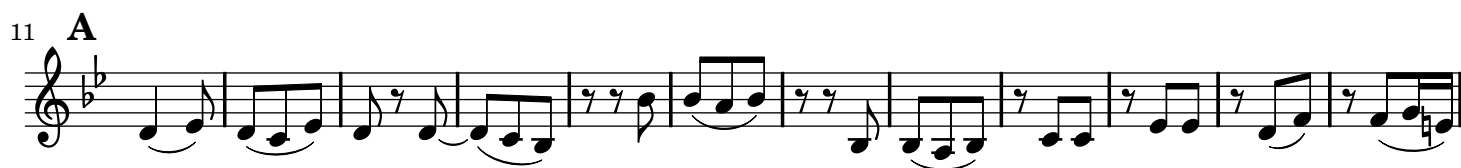
*cresc.* *f* *p* *f* *p*

185

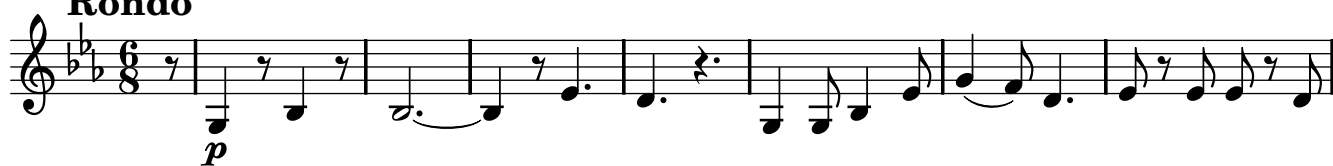
*f* *p* *f*

Detailed description of the musical score: The score is for Violin II, measures 135 to 185. It is written in G major (one sharp) and 4/4 time. Measure 135 starts with a half rest, followed by a quarter rest, then a half note G4. Measure 136 has a half rest, a quarter rest, and a half note A4. Measure 137 has a whole note G4. Measure 138 has a half note G4, a quarter note A4, and a half note B4. Measure 139 has a half note G4, a quarter note A4, and a half note B4. Measure 140 has a half note G4, a quarter note A4, and a half note B4. Measure 141 has a half note G4, a quarter note A4, and a half note B4. Measure 142 has a half note G4, a quarter note A4, and a half note B4. Measure 143 has a half note G4, a quarter note A4, and a half note B4. Measure 144 has a half note G4, a quarter note A4, and a half note B4. Measure 145 has a half note G4, a quarter note A4, and a half note B4. Measure 146 has a half note G4, a quarter note A4, and a half note B4. Measure 147 has a half note G4, a quarter note A4, and a half note B4. Measure 148 has a half note G4, a quarter note A4, and a half note B4. Measure 149 has a half note G4, a quarter note A4, and a half note B4. Measure 150 has a half note G4, a quarter note A4, and a half note B4. Measure 151 has a half note G4, a quarter note A4, and a half note B4. Measure 152 has a half note G4, a quarter note A4, and a half note B4. Measure 153 has a half note G4, a quarter note A4, and a half note B4. Measure 154 has a half note G4, a quarter note A4, and a half note B4. Measure 155 has a half note G4, a quarter note A4, and a half note B4. Measure 156 has a half note G4, a quarter note A4, and a half note B4. Measure 157 has a half note G4, a quarter note A4, and a half note B4. Measure 158 has a half note G4, a quarter note A4, and a half note B4. Measure 159 has a half note G4, a quarter note A4, and a half note B4. Measure 160 has a half note G4, a quarter note A4, and a half note B4. Measure 161 has a half note G4, a quarter note A4, and a half note B4. Measure 162 has a half note G4, a quarter note A4, and a half note B4. Measure 163 has a half note G4, a quarter note A4, and a half note B4. Measure 164 has a half note G4, a quarter note A4, and a half note B4. Measure 165 has a half note G4, a quarter note A4, and a half note B4. Measure 166 has a half note G4, a quarter note A4, and a half note B4. Measure 167 has a half note G4, a quarter note A4, and a half note B4. Measure 168 has a half note G4, a quarter note A4, and a half note B4. Measure 169 has a half note G4, a quarter note A4, and a half note B4. Measure 170 has a half note G4, a quarter note A4, and a half note B4. Measure 171 has a half note G4, a quarter note A4, and a half note B4. Measure 172 has a half note G4, a quarter note A4, and a half note B4. Measure 173 has a half note G4, a quarter note A4, and a half note B4. Measure 174 has a half note G4, a quarter note A4, and a half note B4. Measure 175 has a half note G4, a quarter note A4, and a half note B4. Measure 176 has a half note G4, a quarter note A4, and a half note B4. Measure 177 has a half note G4, a quarter note A4, and a half note B4. Measure 178 has a half note G4, a quarter note A4, and a half note B4. Measure 179 has a half note G4, a quarter note A4, and a half note B4. Measure 180 has a half note G4, a quarter note A4, and a half note B4. Measure 181 has a half note G4, a quarter note A4, and a half note B4. Measure 182 has a half note G4, a quarter note A4, and a half note B4. Measure 183 has a half note G4, a quarter note A4, and a half note B4. Measure 184 has a half note G4, a quarter note A4, and a half note B4. Measure 185 has a half note G4, a quarter note A4, and a half note B4.

## Andante



## Rondo



14

A

*p*

21

28

*fp*

37

44

B

*p*

53

*f*

59

C

*p*

66

74

82

90

*f*

97 **D**

105

111 **E**

121 **F**

128

137

145

152 **Più Allegro**

158

163